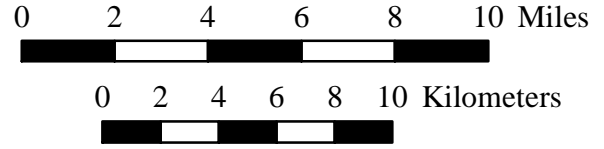
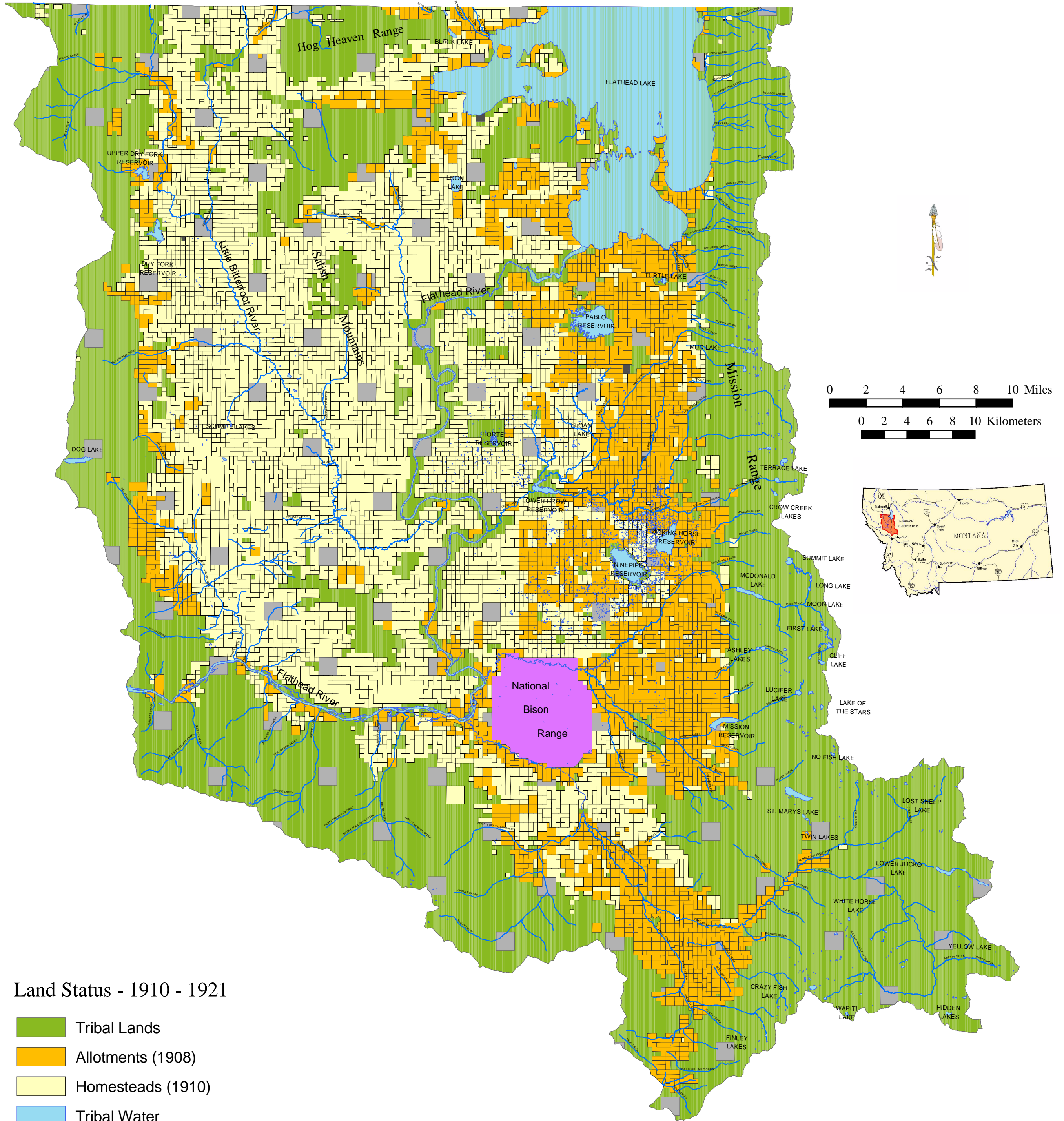
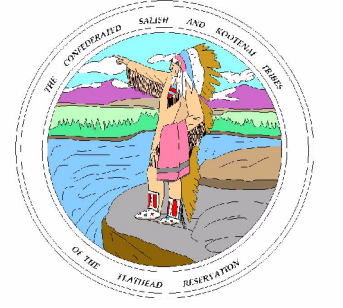


THE CONFEDERATED SALISH & KOOTENAI TRIBES OF THE FLATHEAD NATION



Land Status - 1910 - 1921

- Tribal Lands
- Allotments (1908)
- Homesteads (1910)
- Tribal Water
- State
- National Bison Range
- Townsite

CS&K TRIBES NATURAL RESOURCES DEPARTMENT GIS PROGRAM

This map is intended for demonstrative purposes only and does not reflect current land status. This map is a representation of the physical features, infrastructure, and land ownership boundaries. This map should not be relied upon to establish legal title, boundary lines or locations of improvements.

Please observe all tribal, local, and agency regulations/ordinances. This map was created from records and existing map sources, not from field surveys. Actual land status is maintained by the Confederated Salish & Kootenai Tribes, Titles and Records Pablo, Montana.

Copyright (c) 1993, 2003 CS&K Tribes Natural Resources Department. All rights reserved.