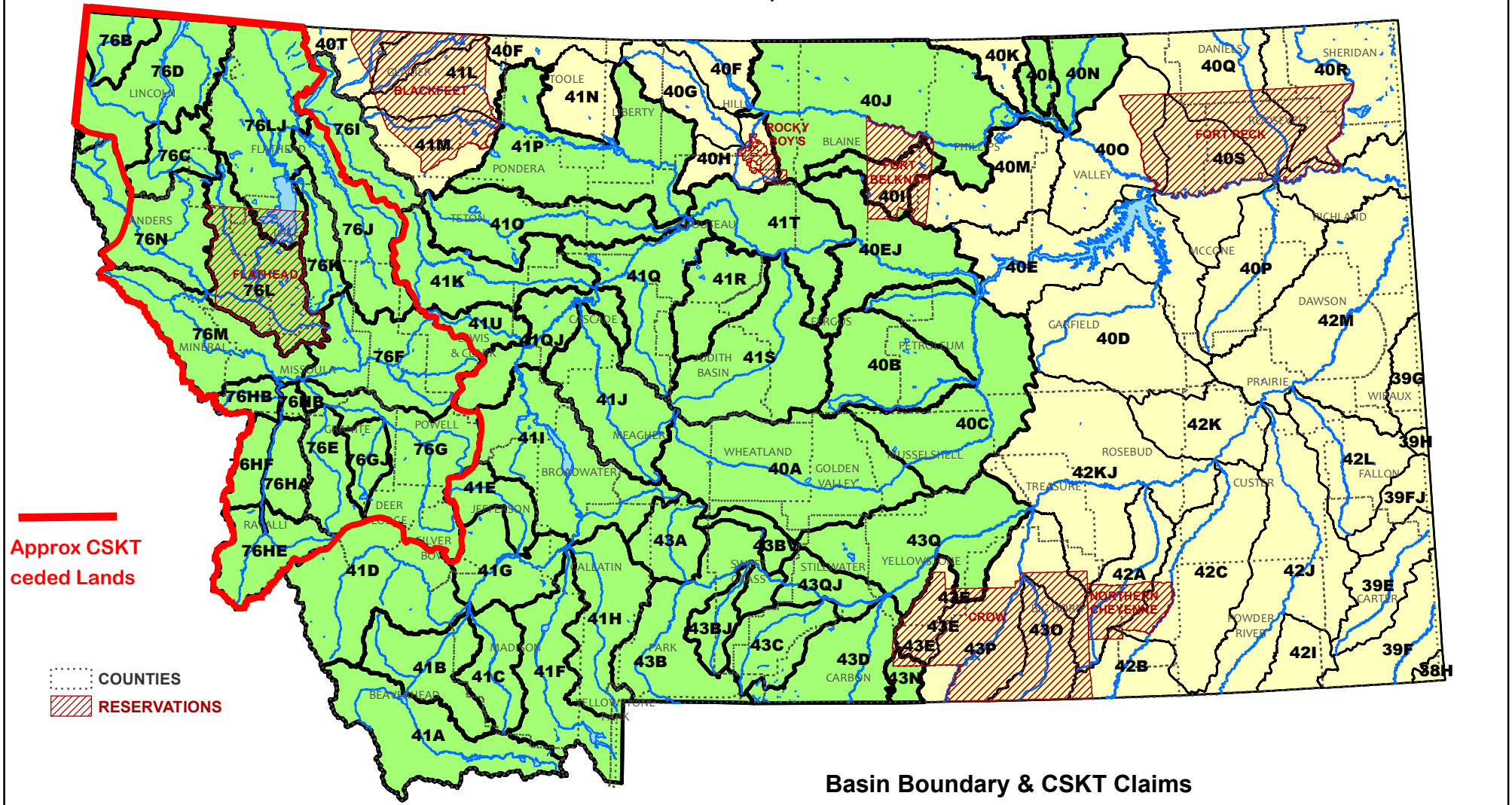


Basins in which the Confederated Salish and Kootenai Tribes have filed water rights claims

June 25, 2015



Approx CSKT ceded Lands

--- COUNTIES
 / / / RESERVATIONS

Basin Boundary & CSKT Claims
 [Green Box] Basins included in CSKT claim filing
 [Yellow Box] Basins not included in CSKT claim filing



CSKT Legal Department
 June 2015
 NAD 1983 StatePlane Montana FIPS 2500

created by DOWL
 \\BIL-FS\BIL-projects\25\20083-05\60GIS\LitigationWork\ClaimFiles\BasinsWithClaims.mxd

United States and CSKT 10,000 Claims Analysis

THE CSKT COMPACT DOES NOT PROVIDE FINALITY

Montana Code Annotated 85-20-1601: CSKT Compact: ARTICLE VII. FINALITY

C. Disposition of State and Federal Suits. **1.c.:** The United States, the Tribes, and the State shall execute and file joint motions pursuant to Rule 41(a), Mont.R.Civ.P., to dismiss without prejudice any and all claims of the Tribes, Tribal members, and Allottees and any and all claims made by the United States for the benefit of the Tribes, Tribal members, and Allottees that have been filed in the Montana Water Court as contemplated by Article VII.D.2. The case adjudicating those claims may only be resumed if either the State or the Tribes exercise the rights each holds under Article VII.A.2 and 4;

D. Settlement of Water Rights Claims. 2. The Tribes and United States will file all of their claims to water on and off of the Flathead Indian Reservation on or before July 1, 2015, pursuant to [85-2-702\(3\)](#), MCA. Upon filing, the Tribes and United States will request that the Montana Department of Natural Resources and Conservation stay any action on such claims pending the occurrence of the following events:

- a. The passage of an Act of Congress ratifying the Compact and authorizing appropriations for monetary settlement to the Tribes;
- b. Approval by the Tribes of the Compact and the Act described in Article VII.D.2.a.
- c. Issuance by the Montana Water Court of a final water right decree or decrees incorporating the water rights quantified pursuant to this Compact; and
- d. All portions of the final Water Court decree or decrees survive exhaustion of all avenues of appeal.

A. Ratification and Effectiveness of Compact.

2. Notwithstanding any other provision in the Compact, the Tribes reserve the unilateral right to withdraw as a Party if:

- a. Congress has not ratified this Compact and authorized appropriations for the Federal contribution to the settlement within four years

from the date on which the ratification of the Compact by the Montana Legislature takes effect under State law. This is a continuing right until Congress ratifies the Compact;

- b. Appropriations are not made in the manner contemplated by the Federal legislation ratifying this Compact;
- c. The Parties do not reach agreement on the State contribution to settlement;
- d. The State has not authorized appropriations for the State contribution to settlement within five years from the date the Compact is ratified by the United States; or
- e. Appropriations are not made by the State in the manner contemplated by any agreement for contributions to settlement made pursuant to Article VI.A.

4. Notwithstanding any other provision in the Compact, the State reserves the unilateral right to withdraw as a Party to the Compact if:

- a. Congress has not ratified this Compact within four years from the date on which the ratification of the Compact by the Montana Legislature takes effect under State law. This is a continuing right until Congress ratifies the Compact;
- b. The Tribes have not ratified this Compact within five years from the date on which the ratification of the Compact by the Montana Legislature takes effect under State law;
- c. Congress requires a State contribution to settlement that exceeds the contributions described in Article VI.A; or
- d. Congress does not authorize and appropriate the Federal share of funding agreed to pursuant to Article VI.B.

MEANING OF "WITHOUT PREJUDICE"

A case dismissed without prejudice is not over and done with and can be brought back to court at any time. The Plaintiffs (Tribes, United States), can bring a new lawsuit, or the same lawsuit again at any time.

TREATY OF HELLGATE AND OFF RESERVATION RIGHTS:

Off reservation rights in the CSKT Compact are claimed to arise from Article 3 of the Treaty of Hellgate, a Stevens Treaty: Below is the language from Article 3. Where is the word water mentioned? What does the language "in Common with the citizens of the Territory" mean?

.... the exclusive right of taking fish in all the stream running through or bordering said reservation is further secured to said Indians; as also the right of taking fish at all usual and accustomed places, in common with the citizens of the Territory and of erecting temporary buildings for curing; together with the privilege of hunting, gathering roots and berries, and pasturing their horses and cattle upon open and unclaimed land

INDIAN CLAIMS COMMISSION STIPULATION AGREEMENT 1966 (17 Ind. Cl. Comm. 297)

Indian Claims Commission Docket 61 settled the tribe's off reservation ceded lands claim and extinguished aboriginal title to those lands.

Stipulation agreement found at p. 309 reads:

"The judgment shall finally dispose of all claims or demands which petitioner has asserted or could have asserted in this case against defendant, and petitioner shall be barred from asserting all such claims or demands in any future action"

WHEN IS FINAL, FINAL?

The Indian Claims Commission was established by Congress to forever resolve the grievances with the tribes that existed at the time. That included their ceded lands, waters, and resources. If the CSKT can take \$ millions in settlement funds but ignore the stipulation agreement that was incorporated into the final settlement, why would they honor the law with respect to any reopening of off reservation claims?

United States and CSKT 10,000 Claims Analysis

Basin	Towns and Cities	On / Off FIR	Purpose / Use	Priority Date	Total # Claims	Source
40A Musselshell River, Above Roundup	Harlowton, Ryegate	Off	Fish & Wildlife	Immemorial	62	Alabaugh Creek (2), American Fork Creek (2), American Fork Creek, South Fork (2), American Fork, Middle Fork (2), Big Elk Creek (2), Bonanza Creek (2), Boulder Creek (2), Box Canyon (2), Careless Creek (2), Checkerboard Creek (2), Comb Creek (2), Cottonwood Creek (2), Cottonwood Creek, Middle Fork (2), Cottonwood Creek, West Fork (2), Daisy Dean Creek (2), Flagstaff Creek, West Fork (2), Haymaker Creek (2), Hensley Creek (2), Hopley Creek, East Fork (2), Hopley Creek, West Fork (2), Lion Creek (2), Loco Creek (2), Morrisy Coulee (2), Musselshell River (1), Musselshell River, North Fork Reach 1 (2), Musselshell River, North Fork Reach 2 (2), Musselshell River, Reach 1 (1), Musselshell River, South Fork (2), Spring Creek (2), Swimming Woman Creek (2), Timber Creek (2), Warm Springs Creek (2)
40B Flatwillow Creek, Including Box Elder Creek	Winnett	Off	Fish & Wildlife	Immemorial	8	Cougar Gulch (aka Fords) Creek (2), Flatwillow Creek (2), Half Moon Creek (2), North Horsethief Canyon (2)
40C Musselshell River, Below Roundup	Roundup	Off	Fish & Wildlife	Immemorial	6	Musselshell River, Reach 2 (2), Musselshell River, Reach 3 (2), Willow Creek (2)
40EJ Missouri River, Between Bullwhacker Creek And Musselshell Rivers	Zortman	Off	Fish & Wildlife	Immemorial	4	Cow Creek (2), Missouri River (2)
40I Peoples Creek		Off	Fish & Wildlife	Immemorial	2	Peoples Creek (aka 'South Branch Peoples Creek) (2)
40J Milk River, bet. Fresno Reservoir & Whitewater Creek	Chinook, Havre, Malta, Saco	Off	Fish & Wildlife	Immemorial	6	Battle Creek (2), Beaver Creek (2), Little Box Elder (Boxelder) Creek (2)

United States and CSKT 10,000 Claims Filed June 15, 2015

United States and CSKT 10,000 Claims Analysis

Basin	Towns and Cities	On / Off FIR	Purpose / Use	Priority Date	Total # Claims	Source
40L Frenchman Creek		Off	Fish & Wildlife	Immemorial	2	Frenchman River (aka Frenchman Creek) (2)
40N Rock Creek, Tributary Of Milk River		Off	Fish & Wildlife	Immemorial	2	Rock (McEachern) Creek (2)
41A Red Rock River	Lima	Off	Fish & Wildlife	Immemorial	72	Bear Creek (2), Big Sheep Creek (2), Black Canyon Creek (2), Bloody Dick Creek (2), Browns Canyon Creek (2), Cabin Creek (2), Clover Creek, East Fork (2), Corral Creek (2), Dad Creek (2), Deadman Creek (2), Deep Creek (2), Frying Pan Creek (2), Hell Roaring Creek (2), Horse Prairie Creek (2), Indian Creek (2), Jones Creek (2), Junction Creek (2), Kate Creek (2), Lake Canyon Creek (2), Little Sheep Creek (2), Little Sheep Creek, West Fork (2), Long Creek (2), Medicine Lodge Creek (2), Narrows Creek (2), Nicholia Creek (2), O'Dell Creek (2), Painter Creek (2), Peet Creek (2), Rape Creek (2), Red Rock Creek (2), Red Rock River, Reach 1 (2), Red Rock River, Reach 2 (2), Shenon Creek (2), Simpson Creek (2), Tom Creek (2), Trapper Creek (2)
41B Beaverhead River	Dillon	Off	Fish & Wildlife	Immemorial	26	Beaverhead River, Reach 1 (2), Beaverhead River, Reach 2 (2), Blacktail Deer Creek (2), Blacktail Deer Creek, East Fork (2), Blacktail Deer Creek, West Fork (2), Brays Canyon Creek (2), Buffalo Creek (2), Dyce Creek, East Fork (2), Dyce Creek, West Fork (2), Grasshopper Creek (2), Poindexter Slough (2), Rattlesnake Creek (2), Reservoir Creek (2)
41C Ruby River	Virginia City	Off	Fish & Wildlife	Immemorial	26	Coal Creek (2), Cottonwood Creek (2), Greenhorn Creek, North Fork (2), Greenhorn Creek, South Fork (2), Indian Creek (2), Mill Creek (2), Ruby River, East Fork (aka Tributary Creek) (2), Ruby River, Middle Fork (2), Ruby River, Reach 1 (2), Ruby River, Reach 2 (2), Ruby River, West Fork (2), Warm Springs Creek (2), Wisconsin Creek (2)

United States and CSKT 10,000 Claims Analysis

Basin	Towns and Cities	On / Off FIR	Purpose / Use	Priority Date	Total # Claims	Source
41D Big Hole River	Divide, Fishtrap, Melrose, Wisdom, Wise River	Off	Fish & Wildlife	Immemorial	168	Alder Creek (2), American Creek (2), Andrus Creek, South Fork (2), Bailey Creek (2), Bear Creek (2), Bender Creek (2), Berry Creek (2), Big Hole River, North Fork (2), Big Hole River, Reach 1 (2), Big Hole River, Reach 2 (2), Big Hole River, Reach 3 (2), Big Hole River, South Fork (aka Big Hole River) (2), Big Lake Creek (aka Rock Creek) (2), Big Swamp Creek, North Branch (2), Birch Creek (2), Bryant Creek (2), Bull Creek (2), Butler Creek (2), California Creek (2), Camp Creek (2), Canyon Creek (2), Cherry Creek (2), Corral Creek (2), Deep Creek (2), Delano Creek (2), Divide Creek (2), Divide Creek (aka Divide Creek, North Fork) (2), Doolittle Creek (2), Englejard Creek (2), Fish Trap Creek (2), Fishtrap Creek, East Fork (2), Fishtrap Creek, West Fork (2), Fox Creek (2), Francis Creek (2), French Creek (2), Governor Creek (2), Hamby Creek (2), Howell Creek (2), Jacobson Creek (2), Jahnke Creek (2), Jerry Creek (2), Johnson Creek (6), Joseph Creek (2), La Marche (LaMarche) Creek (2), Little Lake Creek (2), McVey Creek (2), Meadow Creek (2), Miner Creek (aka North Branch Miner Creek) (2), Moose Creek (4), Mudd Creek (2), Mussigbrod Creek (2), Oregon Creek (2), Pattengail (Pettingill) Creek (2), Pine Creek (2), Pintlar Creek (2), Pioneer Creek (2), Plimpton Creek (2), Rock Creek (6), Ruby Creek (2), Saginaw Creek (2), Sevenmile Creek (2), Seymour Creek (2), Sixmile Creek (2), Slag-a-Melt Creek (aka Big Swamp Creek, South Branch) (2), Squaw Creek (aka Christiansen Creek) (2), Steel Creek (2), Sullivan Creek (2), Swamp Creek (2), Tenmile Creek (2), Thompson Creek (2), Tie Creek (2), Toomey Creek (2), Trail Creek (aka North Fork Big Hole River) (2), Trapper Creek (2), Twelvemile Creek (2), Warm Springs Creek (aka Governor Creek) (2), Willow Creek (2), Wise River (2), Wyman Creek (2)

United States and CSKT 10,000 Claims Analysis

Basin	Towns and Cities	On / Off FIR	Purpose / Use	Priority Date	Total # Claims	Source
41E Boulder River, Tributary Of Jefferson River	Boulder	Off	Fish & Wildlife	Immemorial	18	Basin Creek (2), Bison Creek (2), Boulder River, Reach 1 (2), Boulder River, Reach 2 (2), Boulder River, Reach 3 (2), Little Boulder River (2), Lowland Creek (2), Muskrat Creek (2), Red Rock Creek (2)
41F Madison River	West Yellowstone	Off	Fish & Wildlife	Immemorial	90	Antelope Creek (2), Bear Creek, Middle Fork (2), Bear Creek, North Fork (2), Beaver Creek (2), Black Sand Spring Creek (Black Sand Spring) (2), Blaine Spring Creek (2), Cabin Creek (2), Cedar Creek (2), Cherry Creek (4), Cougar Creek (2), Denny Creek, West Fork (2), Duck Creek (2), Elk River (2), Grayling Creek (2), Horse Creek (2), Hot Springs Creek (2), Indian Creek (2), Indian Creek, South Fork (2), Jack Creek (2), Johnny Gulch (2), Madison River, Reach 1 (2), Madison River, Reach 1 (Lower) (2), Madison River, Reach 2 (2), Madison River, Reach 3 (2), Madison River, Reach 4 (upper) (2), Madison River, South Fork (2), Madison River, West Fork (2), Moore Creek (2), North Meadow Creek (2), O'Dell Spring Creek (2), Papoose Creek (2), Red Canyon Creek (2), Ruby Creek (2), Sheep Creek (2), South Meadow Creek (aka Meadow Creek, South Fork) (2), Standard Creek (2), Sun Creek (aka Squaw Creek) (2), Sun Creek, Middle Fork (aka Squaw Creek, Middle Fork) (2), Trapper Creek (2), Wall Creek (2), Washington Creek (2), Watkins Creek (2), Wigwam Creek (2), Wolf Creek (2)
41G Jefferson River	Pipestone, Three Forks, Twin Bridges, Vendome, Whitehall	Off	Fish & Wildlife	Immemorial	30	Big Pipestone Creek (2), Bigfoot (Big Foot) Creek (2), Fish Creek (2), Halfway Creek (2), Hells Canyon Creek (2), Homestake Creek (2), Jefferson River (2), Mill Creek (2), North Willow Creek (2), South Boulder River (2), South Willow Creek (2), State Creek (2), Whitetail Creek (aka Whitetail Deer Creek) (2), Willow Creek (2), Willow Spring Creek (2)

United States and CSKT 10,000 Claims Analysis

Basin	Towns and Cities	On / Off FIR	Purpose / Use	Priority Date	Total # Claims	Source
41H Gallatin River	Belgrade, Bozeman, Manhattan	Off	Fish & Wildlife	Immemorial	90	Bacon Rind Creek (2), Baker Creek (2), Bear Canyon Creek (aka Bear Creek) (2), Ben Hart Spring Creek (aka Ben Hart Creek) (2), Big Bear Creek (2), Bostwick Creek (2), Bridger Creek (2), Buck Creek (2), Buffalo Horn Creek (2), Cache Creek (2), Cascade Creek (2), East Gallatin River, Reach 1 (2), East Gallatin River, Reach 2 (2), East Gallatin River, Reach 3 (2), Gallatin River (2), Gallatin River, Lower (2), Gallatin River, Middle Fork West Fork (2), Gallatin River, South Fork West Fork (2), Gallatin River, Upper (2), Gallatin River, West Fork (2), Hell Roaring Creek (2), Hyalite Creek, East Fork (2), Hyalite Creek, Reach 1 (2), Hyalite Creek, Reach 2 (2), Hyalite Creek, West Fork (aka Hyalite Creek) (2), Leverich Creek (2), Middle Cottonwood Creek (2), North Cottonwood Creek (2), Porcupine Creek (4), Portal Creek (2), Reese Creek (2), Rocky Creek (aka East Gallatin River) (2), Sage Creek (2), Sourdough Creek (aka Bozeman Creek) (2), South Cottonwood Creek (4), Spanish Creek (2), Spanish Creek, North Fork (2), Spanish Creek, South Fork (2), Squaw Creek (aka Storm Castle Creek) (2), Swan Creek (2), Taylor Creek (4), Thompson Spring Creek (aka Thompson Creek) (2)
41I Missouri River, Above Holter Dam	East Helena, Helena, Townsend	Off	Fish & Wildlife	Immemorial	70	Avalanche Creek (2), Beaver Creek (tributary of Missouri River) (4), Boulder Creek (2), Confederate Gulch (2), Cottonwood Creek (tributary of Missouri River) (2), Crow Creek (2), Deep Creek (2), Deep Creek, North Fork (2), Dry Creek (2), Duck Creek (2), Dutchman Creek (2), Hellgate Gulch (2), Magpie Creek (2), Maupin Creek (2), McClellan Creek (2), McGuire Creek (2), Missouri River, Reach 2 (2), Missouri River, Upper (2), Prickly Pear Creek, Reach 1 (2), Prickly Pear Creek, Reach 2 (2), Quartz Creek (2), Sevenmile Creek (2), Silver Creek (2) Sixteenmile Creek (2), Sixteenmile Creek, South Fork (2), Skelly Gulch (2), Spokane Creek (2), Staubach Creek (2), Tenmile Creek (2), Trout Creek (2), Warm Springs Creek (2), White Gulch (aka White Creek) (2), Whitehorse Creek (2), Willow Creek (tributary of Missouri River) (2)

United States and CSKT 10,000 Claims Analysis

Basin	Towns and Cities	On / Off FIR	Purpose / Use	Priority Date	Total # Claims	Source
41J Smith River	White Sulfur Springs	Off	Fish & Wildlife	Immemorial	70	Abbot Creek (2), Bear Gulch (2), Big Birch Creek (2), Big Camas Creek (2), Black Butte Creek (aka Big Butte Creek) (2), Calf Creek (2), Cottonwood Creek, East Fork (2), Cottonwood Creek, West Fork (2), Decker Creek (2), Decker Creek, North Stem (2), Deep Creek (2), Deep Creek, North Fork (tributary of the Smith River) (2), Deer Creek (aka Whitetail Deer Creek) (2), Dry Creek (2), Eagle Creek (2), Fourmile Creek (2), French Creek (2), Geis Creek (2), Hound Creek (2), Indian Creek (2), Ming Coulee (2), Moose Creek (2), Newlan Creek (2), Rock Creek (tributary of the Smith River) (2), Sawmill Creek (2), Sheep Creek (tributary of the Smith River) (2), Smith River, Lower (2), Smith River, Middle (2), Smith River, North Fork (2), Smith River, Reach 3 (2), Smith River, South Fork (2), Smith River, Upper (2), Studhorse Creek (2), Tenderfoot Creek (2), Willow Creek, South Fork (2)
41K Sun River		Off	Fish & Wildlife	Immemorial	44	Beaver Creek (2), Big George Creek (2), Blacktail Creek (2), Cyanide Creek (2), Elk Creek (2), Ford Creek (2), French Creek (2), Hannan Creek (2), Home Creek (2), Lange Creek (2), Leavitt Creek (2), Little Willow Creek (2), Mortimer Creek (2), Norwegian Creek (2), Petty Creek (2), Smith Creek (2), Sun River, North Fork (2), Sun River, Reach 1 (2), Sun River, Reach 2 (2), Sun River, South Fork (2), Willow Creek (tributary of Sun River) (2), Willow Creek, North Fork (2)
41O Teton River	Choteau	Off	Fish & Wildlife	Immemorial	24	Blackleaf Creek (2), Cow Creek (2), Deep Creek (tributary of Teton River) (2), Deep Creek, North Fork (2), Deep Creek, South Fork (2), McDonald Creek (2), Muddy Creek (2), Spring Creek (tributary of Teton River) (2), Teton River (2), Teton River, North Fork (aka Teton River) (2), Teton River, South Fork (2), Willow Creek, South Fork (2)
41P Marias River	Chester, Conrad, Shelby	Off	Fish & Wildlife	Immemorial	6	Marias River, Reach 1 (2), Marias River, Reach 2 (2), Marias River, Reach 3 (2)

United States and CSKT 10,000 Claims Analysis

Basin	Towns and Cities	On / Off FIR	Purpose / Use	Priority Date	Total # Claims	Source
41Q Missouri River, From Sun To Marias Rivers	Fort Benton, Great Falls	Off	Fish & Wildlife	Immemorial	28	Belt Creek, Dry Fork (2), Belt Creek, Reach 1 (2), Belt Creek, Reach 2 (2), Big Otter Creek (2), Highwood Creek (2), Highwood Creek, North Fork (2), Kirby Creek (2), Lick Creek(2), Logging Creek (2), Lost Creek (2), Missouri River, Reach 4 (2), Pilgrim Creek (2), Shonkin Creek (2), Tillinghast Creek (2)
41QJ Missouri River, From Holter Dam To Sun River	Cascade, Craig	Off	Fish & Wildlife	Immemorial	24	Canyon Creek (2), Deadman Creek (2), Little Prickly Pear Creek, Reach 1 (2), Little Prickly Pear Creek, Reach 2 (2), Lyons Creek (2), Missouri River, Lower (2), Sheep Creek (tributary of the Missouri River) (2), Stickney Creek (2), Trout Creek (2), Virginia Creek (2), Wegner Creek (2), Wolf Creek (2)
41R Arrow Creek	Geraldine	Off	Fish & Wildlife	Immemorial	4	Cottonwood Creek (2), Lone Tree Creek (2)
41S Judith River	Judith Gap, Lewistown, Stanford	Off	Fish & Wildlife	Immemorial	32	Beaver Creek (Spring Creek tributary) (2), Big Spring Creek (2), Big Spring Creek, East Fork (2), Cottonwood Creek (2), Cottonwood Creek (tributary of Big Spring Creek) (2), Dry Wolf Creek (2), Judith River, Lost Fork (2), Judith River, Middle Fork (aka Weatherwax Creek, Harrison Creek) (2), Judith River, Reach 1 (2), Judith River, Reach 2 (2), Judith River, South Fork (2), Rock Creek (2), Running Wolf Creek (2), Sage Creek (2), Warm Spring Creek (2), Yogo Creek (2)
41T Missouri River, From Marias River To And Including Bullwhacker Creek		Off	Fish & Wildlife	Immemorial	2	Missouri River, Reach 5 (2)
41U Dearborn River		Off	Fish & Wildlife	Immemorial	10	Dearborn River (2), Dearborn River, Middle Fork (2), Dearborn River, South Fork (2), Falls Creek (2), Flat Creek (2)
43A Shields River		Off	Fish & Wildlife	Immemorial	40	Brackett Creek, Lower (2), Brackett Creek, Middle (2), Brackett Creek, Middle Fork (2), Brackett Creek, North Fork (2), Brackett Creek, South Fork (2), Brackett Creek, Upper (2), Cottonwood Creek, Lower (2), Cottonwood Creek, Upper

United States and CSKT 10,000 Claims Analysis

Basin	Towns and Cities	On / Off FIR	Purpose / Use	Priority Date	Total # Claims	Source
43A		Off				(2), Crandall Creek (2), Dugout Creek (2), Flathead Creek, Lower (2), Flathead Creek, Middle (2), Flathead Creek, South Fork (2), Flathead Creek, Upper (2), Rock Creek, Shields Drainage (2), Shields River, Lower (2), Shields River, Middle (2), Shields River, Upper (2), Shields River, Upper Reach (2), Smith Creek (2)
43B Yellowstone River, Above And Including Bridger Creek	Big Timber, Livingston	Off	Fish & Wildlife	Immemorial	103	Armstrong Spring Creek (2), Bear Creek, Lower (2), Bear Creek, Upper (2), Big Creek, Lower (2), Big Creek, Upper (2), Big Timber Creek, Lower (2), Big Timber Creek, Middle (2), Billman Creek, Lower (2), Billman Creek, Upper (2), Bridger Creek (2), Bridger Creek, West Fork (2), Buffalo Creek (at Yellowstone National Park Boundary) (2), Cedar Creek (2), Cinnabar Creek, Lower (2), Cinnabar Creek, Upper (2), Coke Creek (aka Miner Creek) (2), Crevice Creek (2), Deep Creek, North Fork (2), Deep Creek, South Fork (2), Deer Creek, Lower (2), Deer Creek, Upper (2), Deer Creek, West Fork Upper (2), Eightmile Creek (2), Elbow Creek (2), Emigrant Creek (2), Fleshman Creek (2), Fridley Creek, Lower (2), Fridley Creek, Upper (2), Hellroaring Creek (at Yellowstone National Park Boundary) (2), Little Mission Creek (4), McDonald Spring Creek (aka McDonald Creek) (2), Mill Creek (2), Mill Creek, East Fork (2), Mill Creek, West Fork (2), Mission Creek (4), Mol Heron Creek, Lower (aka Mulherin Creek) (2), Mol Heron Creek, Upper (aka Mulherin Creek) (2), Nelson Spring Creek (2), Pine Creek (2), Rock Creek (tributary of the Yellowstone River) (2), Sixmile Creek (2), Slough Creek (2), Suce Creek (2), Tom Miner Creek (2), Tom Miner Creek, Lower (2), Tom Miner Creek, Upper (2), Trail Creek (2), Yellowstone River (5)

United States and CSKT 10,000 Claims Analysis

Basin	Towns and Cities	On / Off FIR	Purpose / Use	Priority Date	Total # Claims	Source
43BJ Boulder River, Tributary Of Yellowstone River		Off	Fish & Wildlife	Immemorial	16	Boulder River, Sweet Grass and Park Counties Reach (2), Boulder River, Sweet Grass County Reach 1 (2), Boulder River, Sweet Grass County Reach 2 (2), Davis Creek (2), East Boulder River, Sweet Grass County Reach 1 (2), East Boulder River, Sweet Grass County Reach 2 (2), West Boulder River (2), West Boulder River, Lower (2)
43BV Sweet Grass Creek		Off	Fish & Wildlife	Immemorial	6	Sweet Grass Creek (2), Sweet Grass Creek, Lower (2), Sweet Grass Creek, Middle (2)
43C Stillwater River	Absarokee, Nye, Roscoe	Off	Fish & Wildlife	Immemorial	50	Bad Canyon Creek (2), Butcher Creek, Lower (2), Butcher Creek, Upper (2), Castle Creek (aka Limestone Creek) Stillwater County Reach 1 (Lower) (2), Castle Creek, Stillwater and Sweet Grass Counties Reach (2), Castle Creek, Stillwater County Reach 2 (Upper) (2), East Fishtail Creek, Stillwater County Reach (2), East Rosebud Creek (2), East Rosebud Creek, Lower (2), Fishtail Creek, Stillwater County Reach (2), Iron Creek (2), Little Rocky Creek, Stillwater County Reach (2), Lodgepole Creek (2), Meyers Creek (2), Picket Pin Creek (2), Stillwater River, Lower (2), Stillwater River, Middle (2), Stillwater River, Upper (2), Stillwater River, West Fork, Stillwater County Reach 1 (2), Stillwater River, West Fork, Stillwater County Reach 2 (2), Stillwater River, West Fork, Sweet Grass County Reach (2), Trout Creek (2), West Fishtail Creek, Stillwater County Reach (2), West Rosebud Creek (2), West Rosebud Creek, Lower (2)
43D Clarks Fork Yellowstone	Bearcreek, Belfry, Bridger, Edgar, Fromberg, Joliet Red Lodge, Roberts, Silesia	Off	Fish & Wildlife	Immemorial	36	Bluewater Creek, Lower (2), Bluewater Creek, Middle (2), Bluewater Creek, Upper (2), Clarks Fork Yellowstone River, Lower (2), Clarks Fork Yellowstone River, Upper (2), Clear Creek (2), Crazy Creek (2), Dry Creek (2), Lake Creek (2), Line Creek (2), Red Lodge Creek, Lower (2), Red Lodge Creek, Middle (aka West Red Lodge Creek) (2), Rock Creek, Lower (2), Rock Creek, Middle (2), Rock Creek, Upper (2), Rock Creek, West Fork (2), Willow Creek, Lower (2), Willow Creek, Middle (2)

United States and CSKT 10,000 Claims Analysis

Basin	Towns and Cities	On / Off FIR	Purpose / Use	Priority Date	Total # Claims	Source
43N Shoshone River	Warren	Off	Fish & Wildlife	Immemorial	2	Sage Creek (2)
43Q Yellowstone between Clarks Fork Yellowstone & Bighorn River	Billings, Laurel	Off	Fish & Wildlife	Immemorial	2	Yellowstone River, Reach 7, Clarks Fork to Bighorn River (2)
43QJ Yellowstone, From Bridger Creek To Clarks Fork Yellowstone	Columbus	Off	Fish & Wildlife	Immemorial	5	Yellowstone River (3), Yellowstone River, Reach 6, No-So Carbon-Stillwater Co to Clarks Fork of Yellowstone River (2)
76B Yaak River	Yaak, Sylvanite	Off	Fish & Wildlife	Immemorial	36	Basin Creek, West Fork (aka Basin Creek) (2), Big Foot Creek (aka Big Creek) (2), Burnt Creek (2), Fourth of July Creek (2), Hellroaring Creek (2), Meadow Creek (2), Pete Creek (2), Porcupine Creek (2), Red Top Creek (2), Seventeenmile Creek (2), Spread Creek (2), Vinal Creek (2), Yaak River, East Fork (2), Yaak River, Lower (2), Yaak River, North Fork (aka Yaak River) (2), Yaak River, South Fork (2), Yaak River, Upper (2), Yaak River, West Fork (2),
76C Fisher River	Happys Inn	Off	Fish & Wildlife	Immemorial	16	East Fisher Creek (2), Fisher River (2), Fisher River, Pleasant Valley (2), Fisher River, Silver Butte (2), Himes Creek (2), McGinnis Creek (2), West Fisher River (2), Wolf Creek (2)
76D Kootenai River	Eureka, Fortine, Libby, Jennings, Rexford, Stryker, Trego, Troy, White Haven	Off	Fish & Wildlife	Immemorial	120	Alexander Creek (2), Barron Creek (2), Bear Creek (2), Big Cherry Creek, Above Granite Creek (2), Big Cherry Creek, Below Granite Creek (aka Granite Creek) (2), Big Creek (2), Bobtail Creek (2), Boulder Creek (2), Bristow Creek (2), Cable Creek (2), Callahan Creek, Lower (2), Callahan Creek, Upper (2), Camp Creek (2), Canyon Creek (2), Cedar Creek (2), Cripple Horse Creek (2), Deep Creek, Lower (2), Deep Creek, Upper (2), Dodge Creek (2), Dunn Creek (2), Edna Creek (2), Fivemile Creek (2), Flower Creek (2), Flower Creek, South Fork (2), Fortine Creek (4), Granite Creek (2), Grave Creek (2), Jackson Creek (2), Keeler Creek (2), Kootenai River (2), Lake Creek (2), Libby Creek, Above Big

United States and CSKT 10,000 Claims Analysis

Basin	Towns and Cities	On / Off FIR	Purpose / Use	Priority Date	Total # Claims	Source
76D		Off				Cherry Creek, Middle (2), Libby Creek, Above Swamp Creek, Upper (2), Libby Creek, Below Big Cherry Creek, Lower (2), McGuire Creek (2), Midas Creek (2), Murphy Creek (aka Murphy Lake) (2), O'Brien Creek (2), Parmenter Creek (2), Parsnip Creek (2), Parsnip Creek, Middle & North Fork (2), Pine Creek (2), Pinkham (2), Pipe Creek (2), Pipe Creek, East Fork (2), Quartz Creek (2), Ross Creek (2), Sinclair Creek (2), Spar Creek (aka Stanley Creek) (1), Star Creek (2), Star Creek (aka Stanley Creek) (1), Steep Creek (2), Sullivan Creek (2), Sutton Creek (2), Swamp Creek, Tobacco River Drainage (2), Swamp Creek, Tributary of Libby Creek (2), Ten Mile Creek (aka Tenmile Creek) (2), Therriault Creek (2), Tobacco River (2), Young Creek (2)
76E Rock Creek, Tributary Of Clark Fork River	Quigley	Off	Fish & Wildlife	Immemorial	42	Alder Creek (2), Brewster Creek (2), Cowan Gulch (2), Gilbert Creek (2), Meadow Creek (2), Ranch Creek (2), Rock Creek, East Fork (2), Rock Creek, East Fork at Mouth (2), Rock Creek, East Fork, Below Flint Creek Diversion (2), Rock Creek, Lower (2), Rock Creek, Middle Fork (2), Rock Creek, Ross Fork (aka Ross Fork) (4), Rock Creek, Upper (2), Rock Creek, West Fork (2), Spring Creek (2), Stony Creek (2), Wahlquist Creek (2), Welcome Creek (2), Williams Gulch (2), Willow Creek, Upper (2)
76F Blackfoot River	Bonner, Clearwater, Greenough, Helmville, Lincoln, Ovando, Potomac, Seeley Lake	Off	Fish & Wildlife	Immemorial	96	Alice Creek (2), Arrasta Creek (2), Beaver Creek (2), Blackfoot River, Lower (2), Blackfoot River, North Fork (2), Blackfoot River, Upper (2), Boles Creek (2), Clearwater River (2), Clearwater River (Alva Lake) (2), Clearwater River (Clearwater Lake) (2), Clearwater River (Harper's Lake) (2), Clearwater River (Nez Lake) (2), Clearwater River (Rainy Lake) (2), Clearwater River (Salmon Lake) (2), Clearwater River (Seeley Lake) (2), Clearwater River at Lake Alva (2), Clearwater River, West Fork (2), Copper Creek (2), Cottonwood Creek (2), Cottonwood Creek, North Fork (2),

United States and CSKT 10,000 Claims Analysis

Basin	Towns and Cities	On / Off FIR	Purpose / Use	Priority Date	Total # Claims	Source
76F		Off				Deer Creek (2), Dick Creek (2), Dry Creek (2), Dunham Creek (2), Gold Creek (2), Hogum Creek (2), Keep Cool Creek (2), Landers Fork (2), McCabe Creek (2), McDermott Creek (2), Monture Creek (2), Moose Creek (2), Morrell Creek (2), Nevada Creek (2), Owl Creek (Placid Lake) (2), Placid Creek (2), Placid Creek, North Fork (2), Poorman Creek (2), Richmond Creek (2), Sauerkraut Creek (2), Seven-Up Pete Creek (2), Shanley Creek (2), Stonewall Creek (2), Swamp Creek (2), Upsata Lake (2), Ward Creek (Brown's Lake) (2), Washington Creek (2), Willow Creek (2)
76G Clark Fork, Above Blackfoot River	Anaconda, Avon, Butte, Clinton, Deer Lodge, Drummond, Elliston, Galen, Garrison, Georgetown, Gold Creek, Warm Springs	Off	Fish & Wildlife	Immemorial	98	Baggs Creek (2), Barker Creek (2), Beefstraight Creek (2), Blacktail Creek (2), Browns Gulch (2), Cable Creek (2), Clark Fork River, Reach 1 at Deer Lodge (2), Clark Fork River, Reach 2 near Gold Creek (2), Clark Fork River, Reach 3, near Clinton (2), Clark Fork River, Reach 4 above Missoula (2), Cottonwood Creek, Middle Fork (2), Dempsey Creek (2), Dempsey Creek, North Fork (2), Dog Creek (2), Dry Cottonwood Creek (2), Elliston Creek (2), Foster Creek (2), German Gulch Creek (2), Gold Creek (2), Gold Creek, South Fork (2), Greenough Creek (2), Hail Columbia Gulch (2), Harvey Creek (2), Hope Creek (2), Little Blackfoot River, Reach 1 Upper (2), Little Blackfoot River, Reach 2 Lower (2), Lost Creek (2), North (North Fork) Gold Creek (2), Norton Creek (2), Ontario Creek (2), Ophir Creek (2), Pikes Peak Creek (2), Racetrack Creek, Reach 1 Upper (2), Racetrack Creek, Reach 2 Lower (2), Rock Creek (2), Schwartz (Swartz) Creek (4), Snowshoe Creek (2), Spotted Dog Creek (2), Storm Lake Creek (2), Telegraph Creek (2), Threemile Creek (2), Tin Cup Joe Creek (2), Twin Lakes Creek (2), Twin Lakes Creek, East Fork (2), Tyler Creek (2), Warm Springs Creek, Reach 1 Upper (2), Warm Springs Creek, Reach 2 Lower (2), Willow Creek (2)

United States and CSKT 10,000 Claims Analysis

Basin	Towns and Cities	On / Off FIR	Purpose / Use	Priority Date	Total # Claims	Source
76GJ Flint Creek	Georgetown, Hall, Maxville, Phillipsburg	Off	Fish & Wildlife	Immemorial	24	Boulder Creek (2), Boulder Creek (aka South Boulder Creek) (2), Douglas Creek (2), Dry Creek (2), Flint Creek, North Fork (2), Flint Creek, Reach 1, Upper (2), Flint Creek, Reach 2, Lower (2), Fred Burr Creek (2), Smart Creek (2), Stuart Mill Creek (2), Willow Creek, North Fork, Lower (2), Willow Creek, South Fork, Lower (2)
76HA Bitterroot River, Main Stem	76H Basins: Alta, Conner, Corvallis, Darby, Florence, Hamilton, Lolo, Lolo Hot Springs, Stevensville, Sula, Victor	Off	Fish & Wildlife	Immemorial	36	Ambrose Creek (2), Bitterroot River (2), Bitterroot River, Darby Section Upper (2), Bitterroot River, Tucker Section Lower (2), Burnt Fork Creek (2), Eastman Creek (2), Gird Creek (2), Little Sleeping Child Creek (2), Little Threemile Creek (2), Mill-Fred Burr Creek (aka Fred Burr Creek) (2), Saint Clair Creek (2), Sawmill Creek (2), Skalkaho Creek (2), Skalkaho Creek, Foothills Reach (2), Sleeping Child Creek (4), Threemile Creek (2), Willow Creek (2)
76HB Bitterroot River, North End		Off	Fish & Wildlife	Immemorial	28	Bear Creek (2), Butte Creek, West Fork (2), Carlton Creek (2), Grave Creek (2), Howard Creek (2), Lolo Creek (4), Lolo Creek, South Fork (2), Mill Creek (2), Mill Creek, East Fork (2), Mormon Creek (2), O'Brien Creek (2), One Horse Creek (2), Woodman Creek (2),
76HE Bitterroot River, South End		Off	Fish & Wildlife	Immemorial	102	Baker Creek (2), Beavertail Creek (2), Bertie Creek (2), Bitterroot River, East Fork at Moose Creek (2), Bitterroot River, East Fork, Above Jennings Upper (2), Bitterroot River, East Fork, Above Spring Gulch Lower (2), Bitterroot River, West Fork at Salt Block Creek (2), Bitterroot River, West Fork below Painted Rocks (2), Blue Joint Creek (2), Boulder Creek (2), Cameron Creek (2), Camp Creek, East Fork (2), Camp Creek, West Fork (2), Chaffin Creek (2), Chaffin Creek, South Fork (2), Chicken Creek (2), Christisen Creek (2), Coal Creek (2), Deer Creek (2), East Piquett Creek (2), Gemmell Creek (2), Hughes Creek (2), Laird Creek (2), Lavene Creek (2), Little Boulder Creek (2), Little Rock Creek (2), Little Tin Cup Creek (2), Little Trapper Creek (2), Maynard Creek (2), Medicine Tree Creek (2), Mud Creek (2), Nelson Creek (2),

United States and CSKT 10,000 Claims Analysis

Basin	Towns and Cities	On / Off FIR	Purpose / Use	Priority Date	Total # Claims	Source
76HE		Off				Nez Perce Fork (2), Nez Perce, Little West Fork (2), Overwhich Creek (2), Piquett Creek (2), Reimel Creek (2), Rock Creek (2), Rombo Creek (2), Rye Creek (2), Rye Creek, Lower (2), Rye Creek, Upper (2), Slate Creek (2), Tin Cup Creek (4), Tolan Creek (2), Trapper Creek (2), Ward Creek (2), Warm Springs Creek (2), Waugh Creek (2), West Creek (2)
76HF Bitterroot River, West Side		Off	Fish & Wildlife	Immemorial	42	Bass Creek (2), Bear Creek (2), Big Creek (4), Blodgett Creek (2), Camas Creek (2), Canyon Creek, Midway Reach (2), Fred Burr Creek (2), Gash Creek, at South Gash Creek (2), Kootenai Creek (2), Lost Horse Creek (2), McCalla Creek (2), Mill Creek (2), Roaring Lion Creek (2), Sawtooth Creek (2), Sharrott Creek (2), Sheafman Creek (2), Smith Creek (2), Sweathouse Creek (2), Sweeney Creek (4)
76I Flathead River, Middle Fork	Essex, Lake McDonald, West Glacier	Off	Fish & Wildlife	Immemorial	12	Dickey Creek (2), Essex Creek (2), Flathead River, Middle Fork, Lower (2), Flathead River, Middle Fork, Upper (2), Stanton Creek (2), Tunnel Creek (2)
76J Flathead River, South Fork		Off	Fish & Wildlife	Immemorial	24	Clayton Creek (2), Doris Creek (2), Emery Creek (2), Flathead River, South Fork, Lower (2), Flathead River, South Fork, Upper (2), Graves Creek (2), Hungry Horse Creek (2), Lost Johnny Creek (2), Sullivan Creek (2), Tent Creek (2), Wheeler Creek (2), Wounded Buck Creek (2)
76K Swan River	Bigfork, Condon, Swan Lake	Off	Fish & Wildlife	Immemorial	64	Bond Creek (2), Cedar Creek (2), Cold Creek (2), Cooney Creek (2), Dog Creek (2), Elk Creek (2), Fatty Creek (2), Glacier Creek (2), Goat Creek (2), Groom Creek (2), Hall Creek (2), Holland Creek (2), Jim Creek (2), Lion Creek (2), Lost Creek (2), Lost Creek, North Fork (4), Lost Creek, South Fork (4), Owl Creek (2), Piper Creek (2), Pony Creek (2), Porcupine Creek (2), Scout Creek (2), Sixmile Creek (2), Smith Creek (2), Soup Creek (2), Squeezer Creek (2), Swan River, At Lindbergh Lake Rd. (2), Swan River, At Piper Creek (2), Swan River, Below Swan Lake (2), Woodward Creek, South (2)

United States and CSKT 10,000 Claims Analysis

Basin	Towns and Cities	On / Off FIR	Purpose / Use	Priority Date	Total # Claims	Source	
76L Flathead River, Below Flathead Lake	Arlee, Camas Prairie, Charlo, Dixon, Evaro, Hot Springs, Lonepine, Marion, Moiese, Niarada, Perma, Pablo, Polson, Ravalli, Ronan, St. Ignatius	On	DCMI: Current	1855	16	Adams Creek, Unnamed Tributary (2), Agate Stevens Creek (32), Agate Stevens Creek, Unnamed Tributary (2), Agency Creek (46), Agency Spring (2), Alder Creek (2), Alder Creek, Unnamed Tributary (4), Antoine Creek (3), Ashley Creek (94), Ashley Creek (Lower Mission) (4), Ashley Creek (Upper Mission) (2), Ashley Creek at Mission A Canal, tributary of Post Creek (1), Ashley Creek Tributary, in Section 3 above Pablo Feeder Canal (1), Ashley Creek, at mouth, tributary of Post Creek (1), Ashley Creek, Tributary (6), Ashley Creek, Tributary of Post Creek (2), Ashley Creek, Unnamed Tributary (1), Barnaby Creek (24), Barnowsky Ditch (1), Bassoo Creek, Unnamed Tributary (5), Big Creek (14), Big Creek, at mouth (1), Big Gulch (1), Big Gulch, near mouth (1), Big Gulch, Unnamed Tributary (3), Big Knife Creek (17), Big Knife Creek, at mouth (1), Big Knife Creek, Unnamed Tributary (1), Big Meadow (2), Bisson Creek (10), Bisson Creek, at mouth (1), Blodgett Creek (13), Blodgett Creek, above Jocko S Canal (1), Blodgett Ditch (1), Blue Bay Creek (1), Blue Jay Spring (1), Bowser Coulee, Unnamed Tributary (1), Briggs Creek (7), Buffalo Spring (1), Burgess Creek (5), Burgess Creek, near mouth (1), Camas Creek (18), Camas Creek, at C-4000 Rd (1), Camas Creek, East Fork (1), Camas Creek, Groundwater Tributary (1), Camas Creek, near mouth (1), Camas Creek, North Fork, Unnamed Tributary (2), Camas Creek, Tributary of (53), Camas Creek, Unnamed Tributary (37), Centipede Creek (24), Charity Creek (3), Charity Creek, Unnamed Tributary (2), Clam Creek (8), Clam Creek, near mouth (1), Clam Creek, Unnamed Tributary (4), Clear Creek (2), Clear Creek, Tributary of Camas Creek (3), Clear Creek, Unnamed Tributary (3), Cold Creek (12), Cold Creek, above Cold Creek lining (1), Cold Creek, near mouth, tributary of Jocko River (1), Coleman Coulee (15), Coleman Coulee, Unnamed Tributary (1), Copper Creek, Unnamed Tributary (4), Corks	
			DCMI: Future	1855	2		
			Fish & Wildlife				
			Other Use	Immemorial	94		
			High Mtn Lakes	Immemorial	211		
			On Reservation	Immemorial	256		
			Reservoirs	Immemorial	0		
			Springs	Immemorial	734		
			Wetlands	Immemorial	1,071		
			Irrigation:				
			FIP	1855	1,466		
			HIA	1855	1,080		
			FIP Reservoir	1855	17		
			Reservoir	1855	19		
			Future	1855	247		
			Future Reservoir	1855	13		
			Industrial: Future	1855	2		
			Other: Aquifers	Immemorial	11		
			Power Generation	1855	55		
			Stock	1855	548		
Stock Ponds	1855	4					
Wells	1855	1,619					
Total			7,465				

United States and CSKT 10,000 Claims Analysis

Basin	Towns and Cities	On / Off FIR	Purpose / Use	Priority Date	Total # Claims	Source
76L		On				Creek, Unnamed Tributary (1), Cottonwood Creek (4), Cottonwood Creek, Near Mouth (1), Cottonwood Creek, North Fork, Unnamed Tributary (2), Cottonwood Creek, Unnamed Tributary (2), Cottonwood Creek, Unnamed Tributary Manmade Pit (2), Cottonwood Creek, West Fork, Unnamed Tributary (4), Courville Creek (21), Courville Creek, above Pablo feeder canal (1), Coyote Creek, Unnamed Tributary (2), Cromwell Creek (11), Cromwell Creek, at Valley Floor (1), Cromwell Creek, Unnamed Tributary (27), Crossing Creek (1), Crossing Creek, Unnamed Tributary (4), Crow Creek (89), Crow Creek Groundwater Tributary (1), Crow Creek, above Lower Crow Reservoir (1), Crow Creek, above South Crow Creek (1), Crow Creek, at mouth (1), Crow Creek, Middle (17), Crow Creek, Mud Creek (1), Crow Creek, North (38), Crow Creek, North, Unnamed Tributary (1), Crow Creek, South (21), Crow Creek, Tributary (258), Crow Creek, Unnamed Tributary (5), Crow Pump Canal (5), Dayton Creek (2), Dee Creek (2), Deep Creek (11), Deep Creek, Unnamed Tributary (1), Deep Draw (5), Deep Draw, at Mouth (1), Deep Draw, Unnamed Tributary (6), Ditch (6), Ditch/Water Table (6), Dry Creek (76), Dry Creek (aka North Dry Creek) (1), Dry Creek (to Ashley Creek) (4), Dry Creek (to Mission Creek) (4), Dry Creek, above Tabor Reservoir, a tributary of Mission Creek (aka Dry Lake Creek) (1), Dry Creek, North Fork (1), Dry Creek, tributary in section 2 (1), Dry Creek, Tributary of Ashley Creek (2), Dry Creek, Tributary of Mission Creek (10), Dry Creek, Tributary to Ashley Creek (1), Dry Creek, Unnamed Tributary (2), Dry Fork Creek (116), Dry Fork Creek, (aka Upper Dry Fork Creek) (1), Dry Fork Creek, about Lower Dry Fork Reservoir (1), Dry Fork Creek, at Mouth (1), Dry Fork Creek, Unnamed Tributary (15), Dry Lake Creek (5), Dubai Creek (4), Dublin Gulch (3), Dublin Gulch, Unnamed Tributary (6), Ducharme Creek (4), Dunbay Creek, at mouth

United States and CSKT 10,000 Claims Analysis

Basin	Towns and Cities	On / Off FIR	Purpose / Use	Priority Date	Total # Claims	Source
76L		On				(1), Dupuis Creek (5), Eagle Pass Creek (11), Eagle Pass Creek, at Pablo feeder canal (1), Elk Creek, Unnamed Tributary (3), Elmo Sewage Lagoons (1), Falls Creek (18), Falls Creek, at mouth (1), Finley Creek (75), Finley Creek East Fork (1), Finley Creek, at Camas D Canal, Tributary of Dry Fork Creek (1), Finley Creek, East Fork (23), Finley Creek, Jocko (1), Finley Creek, Tributary of Jocko River (1), Finley Creek, Unnamed Tributary (10), Flathead & Jocko Rivers (2), Flathead Lake Groundwater tributary (2), Flathead Lake Tributary (2), Flathead Reservation Surface Water (3), Flathead River (Flathead Lake), unnamed tributary (8), Flathead River (Flathead Lake), Unnamed Tributary, Manmade Pit (2), Flathead River, Tributary (177), Flathead River, Unnamed Tributary (210), Flathead River, Unnamed Tributary Waste and Seepage (1), Frog Creek (9), Garceau Gulch (4), Garceau Gulch, Near Mouth (1), Garceau Gulch, Unnamed Tributary (10), Garceau Gulch, Unnamed Tributary Spring (2), Garden Creek (60), Garden Creek, at Mouth (1), Garden Creek, Unnamed Tributary (11), Gold Creek (4), Gold Creek, at mouth (1), Green Springs (2), Grizzly Creek (13), Grizzly Creek, at Tabor Feeder Canal (1), Gunderson Creek (2), Gunderson Creek, near mouth (1), Gunderson Creek, Unnamed Tributary (5), Hellroaring Creek (9), Hewolf Creek (6), Holmes Creek (1), Holt Creek, Unnamed Tributary (2), Hopkins Draw (14), Hot Springs Creek (35), Hot Springs Creek, at Mouth (1), Hot Springs Creek, North Fork (3), Hot Springs Creek, North Fork, Unnamed Tributary (1), Hot Springs Creek, Unnamed Spring Tributary (1), Hot Springs Creek, Unnamed Tributary (2), Indian Spring (2), Irvine Creek (1), Irvine Creek, Unnamed Spring Tributary (6), Irvine Creek, Unnamed Tributary (1), Jette Lake, Unnamed Tributary (3), Jocko Creek (4), Jocko R Canal (31), Jocko River, Groundwater Tributary (1), Jocko River, North Fork,

United States and CSKT 10,000 Claims Analysis

Basin	Towns and Cities	On / Off FIR	Purpose / Use	Priority Date	Total # Claims	Source
76L		On				Unnamed Tributary (1), Jocko River, Tributary (226), Jocko River, Unnamed Spring Tributary (1), Jocko River, Unnamed Tributary (99), Jocko River, Unnamed Tributary Waste and Seepage (1), Jocko Spring Creek (15), Jocko Spring Creek, near mouth (1), Jocko Spring Creek, Unnamed Tributary (2), Jocko Transbasin Diversion (5), Kelleys Creek, at mouth (1), Kellys Creek (2), Kellys Creek (2), Kellys Creek, Unnamed Tributary (4), Kitty Girl Creek (2), LaMoose Creek (21), LaMoose Creek, above Jocko K Canal (1), Lamoose Creek, North Fork, Unnamed Tributary (2), Lamoose Creek, South Fork, Unnamed Tributary (1), Letzen Gulch (13), Letzen Gulch, at Camas D Canal (1), Letzen Gulch, Unnamed Tributary (1), Little Bitterroot River, Groundwater Tributary (1), Little Bitterroot River, Unnamed Tributary, Waste and Seepage (1), Little Bitterroot River, Unnamed Tributary (293), Little Creek (3), Little Money Creek (1), Little Money Creek, near mouth (1), Loon Lake, Unnamed Tributary (12), Lost Creek (12), Lost Creek, above Pablo Feeder Canal (1), Lost Spring Creek, Unnamed Tributary (6), Magpie Creek (12), Magpie Creek west (1), Magpie Creek, near mouth, tributary of Flathead River (1), Magpie Creek, West (3), Magpie Spring Creek (2), Magpie Spring Creek, near mouth (1), Marcharl Creek, North (1), Markle Creek (3), Markle Creek, Unnamed Tributary (6), Markle Pass Creek (14), Markle Pass Creek, Near Mouth (1), Markle Pass Creek, Unnamed Tributary (9), Markle Passcreek (9), Marsh Creek (28), Marsh Creek, at mouth (1), Mary Creek (3), Mary Creek, Unnamed Tributary (6), Matt Creek (11), Matt Creek, Unnamed Tributary (5), McClure Creek (39), McClure Creek, Unnamed Tributary (1), McCollom Creek, above Mission F Canal (1), McCollum Creek (21), McCollum Creek, Unnamed Tributary (1), McDonald Creek (1), McDonald Creek, Unnamed Tributary (3), McGinnis Creek (1), McGinnis Creek, Unnamed Tributary (2),

United States and CSKT 10,000 Claims Analysis

Basin	Towns and Cities	On / Off FIR	Purpose / Use	Priority Date	Total # Claims	Source
76L		On				Meinsinger Spring Creek (2), Micharl Creek (8), Micharl Creek, North (1), Micharl Creek, North, Unnamed Tributary (2), Michel Creek, Unnamed Tributary (5), Middle Crow Creek (6), Middle Crow Creek, near mouth (1), Middle Fork Crow Creek (1), Middle Fork Jocko River (1), Mikes Creek (14), Mikes Creek, at Mission DA Canal (1), Mikes Creek, North Fork (2), Mill Creek (11), Mill Creek, Near Mouth, tributary of Little Bitterroot River (1), Mill Creek, Unnamed Tributary (13), Mill Pocket Creek (16), Mill Pocket Creek, at Mouth (1), Mill Pocket Creek, Unnamed Tributary (2), Mission 3F-14-1 Near Ditch (1), Mission Creek (176), Mission Creek (Upper) (15), Mission Creek, above Post Creek (1), Mission Creek, Groundwater Tributary (1), Mission Creek, near mouth (1), Mission Creek, Unnamed Tributary (258), Mission Creek, Unnamed Tributary, Waste and Seepage (1), Moiese A Canal (17), Moiese Creek (9), Mollman Creek (21), Moss Creek (2), Mud Creek (113), Mud Creek, at Pablo Feeder Canal (1), Mud Creek, Unnamed Tributary (4), Murphy Draw (2), Murphy Draw, Unnamed Tributary (5), None Listed (1), North Ashley Creek, above Pablo Feeder Canal, tributary of Mud Creek (1), North Crow Creek (12), North Crow Creek, Unnamed Tributary (1), North Dry Creek, at Mission A Canal, a tributary of Ashley Creek (1), North Micharl Creek (1), Old Allard Ditch #1 (1), Oliver Gulch (1), Oliver Gulch, near mouth (1), Oliver Gulch, Unnamed Tributary (15), Pablo 31A (1), Pablo 50A-14A (2), Pablo 70A-26-1 (1), Pablo 73A-5-5 (4), Pablo Feeder Canal (36), Pauline Creek, Unnamed Tributary (1), Pellew Creek (8), Pellew Creek, above Jocko K Canal (1), Pellew Creek, Unnamed Tributary (1), Pierce Creek (5), Pine Creek, Unnamed Tributary (2), Pistol Creek (5), Pistol Creek, Above North Fork Jocko River, tributary of North Fork Jocko River (1), Pistol Creek, above Sabine Creek (1), Pistol Creek, Unnamed

United States and CSKT 10,000 Claims Analysis

Basin	Towns and Cities	On / Off FIR	Purpose / Use	Priority Date	Total # Claims	Source
76L		On				Tributary (7), Placid Creek Transbasin Diversion (5), Placid Creek, North Fork (6), Pocket Creek (1), Poirier Creek (53), Poirier Creek, at Pablo Feeder Canal (1), Poison Oak Creek (53), Poison Oak Creek, at Mission A Canal (1), Poison Oak Creek, near mouth (1), Post 22C (1), Post 7D (1), Post A Canal (21), Post Creek (131), Post Creek, at mouth (1), Post Creek, at Pablo Feeder Canal (1), Post Creek, at Post F Canal (1), Post Creek, Unnamed Tributary (50), Post Creek, Unnamed Tributary, Natural Pit (1), Post Creek, Unnamed Tributary, Waste and Seepage (1), Post F Canal (1), Power Creek (2), Power Creek (1), Power Creek, above Dry Creek lining (1), Racehorse Gulch (1), Racehorse Gulch, near mouth (1), Racehorse Gulch, Unnamed Tributary (13), Rainbow Lake Creek (2), Rainbow Lake Creek, Above Rainbow Lake w/in interior drainage (1), Rainbow Lake Creek, Unnamed Tributary (2), Rattlesnake Gulch (1), Rattlesnake Gulch, Near Mouth (1), Rattlesnake Gulch, Unnamed Tributary (17), Redmond Creek (7), Revais Creek (25), Revais Creek, at mouth (1), Revais Creek, Unnamed Tributary (3), Revais Pump Canal (13), Rock Creek (70), Rock Creek, above Pablo feeder Canal (1), Ronan Creek, Unnamed Tributary (4), Ronan Spring Creek, near mouth, tributary of Crow Creek (1), S-14 creek (14), S-14 Creek, at mouth (1), Sabine Creek (20), Sabine Creek, at Mission F Canal (1), Sabine Creek, at mouth (1), Schley Creek (5), Seepay Creek (5), Seepay Creek, near mouth (1), Selow Creek (3), Selow Creek, Unnamed Tributary (3), South Crow Creek (111), South Crow Creek, at mouth (1), Spring (1), Spring Canyon Creek, Unnamed Tributary (1), Spring Creek (14), Spring Creek, Tributary of Crow Creek (5), Spring Creek, Tributary of Flathead River (1), Spring Creek, Unnamed Tributary (7), Stevens Creek (9), Stinger Creek (1), Stinger Creek, near Mouth (1), Storm Runoff / Water Table Fluctuation (20), Sullivan Creek (23), Sullivan

United States and CSKT 10,000 Claims Analysis

Basin	Towns and Cities	On / Off FIR	Purpose / Use	Priority Date	Total # Claims	Source
76L		On				Creek, at Mouth Near Lonepine (1), Sullivan Creek, at Reservation Boundary (1), Sullivan Creek, Unnamed Tributary (25), Sullivan Gulch (4), Sullivan Gulch, Near Mouth (1), Sullivan Gulch, Unnamed Tributary (11), Sunrise Spring (1), Talking Water Creek (1), Thorne Creek (12), Thorne Creek, at Mission F Canal (1), Trisk Creek, Unnamed Tributary (3), Unnamed Stock Pond Lot 5 S33 (1), Unnamed Stock Pond NWSW Sec 35 (1), Upper Jocko S Canal (10), Valentine Creek (34), Valentine Creek, at Mission A Canal (1), Valley Creek (36), Valley Creek, at mouth (1), Valley Creek, East Fork, Unnamed Tributary (4), Valley Creek, Middle Fork (1), Valley Creek, North Fork (19), Valley Creek, North Fork, Unnamed Tributary (4), Valley Creek, Unnamed Tributary (11), Vanderburg Creek (4), Vanderburg Creek, near mouth (1), Vinson Creek, Unnamed Tributary (2), Walchuck Coulee (4), Walchuck Coulee (3), Walchuck Coulee, Unnamed Tributary (7), Warm Springs Creek (6), Welcome Spring (1), West Magpie Creek (2), West Miller Coulee (11), West Miller Coulee, Unnamed Tributary (4), Westphal Coulee (1), Westphal Coulee, Unnamed Tributary (5), Whiskey Creek (1), Whiskey Creek, near mouth (1), Whiskey Creek, Unnamed Tributary (4), Whiskey Gulch, Unnamed Tributary (1), White Earth Creek (1), White Earth Creek, near mouth (1), White Earth Creek, Unnamed Tributary (19), Wilcox Draw, Unnamed Tributary (1), Wilks Gulch, near mouth (1), Wilks Gulch (2), Wilks Gulch, Unnamed Tributary (2), Yellow Bay Creek (1)
76L		On				Reservoirs: Black Lake Reservoir (2), Hillside Reservoir (2), Horte Reservoir (2), Hubbart Reservoir (2), Jocko Lake Reservoir (2), Kicking Horse Reservoir (13), Little Bitterroot Reservoir (2), Lower Crow Reservoir (2), Lower Lone Pine Reservoir (2), McDonald Reservoir (2), Mission Reservoir (2), Ninepipe Reservoir (40), Pablo Reservoir (65), St. Mary's

United States and CSKT 10,000 Claims Analysis

Basin	Towns and Cities	On / Off FIR	Purpose / Use	Priority Date	Total # Claims	Source
76L		On				Reservoir (2), Turtle Reservoir (1), Upper Lone Pine Reservoir (2)
76L		On				Lakes: Flathead Lake (2), Turtle Lake (2)
76L		On				Dams: Kerr Dam (2), Kerr Dam, Flathead River (1)
76L		On				Rivers: Flathead River (331), Flathead River (Flathead Lake) (24), Jocko River (157), Jocko River, above Valley Creek (1), Jocko River, at Jocko S Canal (1), Jocko River, at lower S Canal (1), Jocko River, at mouth (1), Jocko River, below Jocko K Canal (1), Jocko River, Middle Fork (19), Jocko River, Middle Fork, near mouth (1), Jocko River, Middle Fork; Jocko Creek; Placid Creek Transbasin Diversion (1), Jocko River, North Fork (23), Jocko River, North Fork, below Tabor Feeder Canal (1), Jocko River, North Fork, near mouth (1), Jocko River, South Fork (18), Jocko River, South Fork, near Arlee (1), Little Bitterroot River (90), Little Bitterroot River, at Camas A Canal (1), Little Bitterroot River, at Mouth (1), Little Bitterroot River, below Hot Springs Creek (1)
76L		On				Groundwater and Aquifers: Flathead Reservation Ground Water (4), Groundwater (1876), Groundwater in Camas Prairie Aquifer on FIR (1), Groundwater in Finley Creek Aquifers on FIR (1), Groundwater in Flathead River and Lower Jocko River Aquifers on FIR (1), Groundwater in Flathead River Tributary Aquifers on FIR (1), Groundwater in Jocko River Aquifers on FIR (1), Groundwater in Little Bitterroot River and Sullivan Flats Aquifers on FIR (1), Groundwater in Mission Valley Aquifers on FIR (1), Groundwater in North Fork Jocko River Aquifers on FIR (1), Groundwater in Sunnyslope Aquifers on FIR (1), Groundwater in Valley Creek Aquifers on FIR (1), Groundwater in White Earth Creek Aquifers on FIR (1), Groundwater w/in Flathead River Drainage on reservation upstream from natural Flathead Lake Outlet (5),

United States and CSKT 10,000 Claims Analysis

Basin	Towns and Cities	On / Off FIR	Purpose / Use	Priority Date	Total # Claims	Source
76L		On				Groundwater within Flathead Drainage on FIR downstream from Natural Flathead Lake Outlet (2), Grounwater w/in Flathead River Drainage Upstream from Natural Flathead Lake Outlet (2)
76L		Off	Fish & Wildlife	Immemorial	2	Flathead River (2)
76LJ Flathead River, To And Including Flathead Lake	Columbia Falls, Elmo, Kalispell, Lakeside, Olney, Polebridge, Polson, Whitefish,	On	DCMI: Current DCMI: Future F&W: Other Use F&W: Mtn Lakes F&W: On Res F&W: Other Uses F&W: Springs F&W: Wetlands Irrigation: FIP HIA Future Future Reservoir Industrial: Future Other: Aquifers Power Generation Stock Stock Ponds Wells Total	1855 1855 Immemorial Immemorial Immemorial Immemorial Immemorial 1855 1855 1855 1855 1855 1855 Immemorial 1855 1855 1855 1855	4 2 1 5 34 6 4 31 2 9 3 1 2 5 12 31 0 308 460	Creeks: Big Creek (1), Bisson Creek (1), Blue Bay Creek (4), Blue Bay Creek, near mouth (1), Boulder Creek (3), Boulder Creek, near mouth (1), Centipede Creek (6), Centipede Creek, at mouth (1), Dayton Creek (4), Dayton Creek, at mouth (1), Dee Creek (1), Dee Creek, near mouth (1), Ducharme Creek (4), Dupuis Creek (1), Flathead Lake, Unnamed Tributary (7), Flathead Lake Tributary (31), Flathead Lake Tributary, North of Station Creek in Section 10 (1), Flathead Lake Tributary, South of Yellow Bay Creek in Section 3 (1) Flathead Reservation Surface Water (2), Hellroaring Creek (6), Hellroaring Creek, near mouth (1), Holmes Creek (1), Holmes Creek, near mouth (1), Lolo Creek (2), Loon Lake, Unnamed Tributary (1), Moss Creek (3), Moss Creek, near mouth (1), Proctor Creek (1), Proctor Creek, at mouth (1), Ronan Creek, Unnamed Tributary, Waste and Seepage (2), SkiDoo Creek (1), Skidoo Creek, near Mouth (1), Station Creek (2), Station Creek, near Polson (1), Storm Runoff / Water Table Fluctuation (2), Talking Water Creek (3), Talking Water Creek, near Polson (1), Teepee Creek (3), Teepee Creek, near Polson (1), Yellow Bay Creek (4)
76LJ		On				Lakes: Flathead Lake (2),
76LJ		On				Rivers: Flathead River (Flathead Lake) (1), Flathead River (Flathead Lake) All tributaries of Flathead River entering Flathead Lake on FIR (1), Flathead River (Flathead Lake), Unnamed Tributary (2), Flathead River (Flathead Lake),

United States and CSKT 10,000 Claims Analysis

Basin	Towns and Cities	On / Off FIR	Purpose / Use	Priority Date	Total # Claims	Source
76LJ		On				Unnamed Tributary, Waste and Seepage (2), Flathead River, Unnamed Tributary (3), Little Bitterroot River, Briggs Creek, Redmond Creek (1)
76LJ		On				Groundwater: Flathead Reservation Ground Water (5), Groundwater (326), Groundwater in Finley Point Aquifers near Flathead Lake on FIR (1), Groundwater in Mission Valley Aquifers on FIR (1), Groundwater in Sullivan Flats Aquifers on FIR (1), Groundwater in Sunnyslope Aquifers on FIR (1), Groundwater in West Shore Aquifers on FIR (1), Groundwater w/in Flathead River Drainage on reservation upstream from natural Flathead Lake Outlet (1)
76LJ		Off		Immemorial	56	Abbot Creek (2), Big Creek (2), Canyon Creek (2), Coal Creek (2), Flathead River (4), Flathead River, North Fork, Lower (2), Flathead River, North Fork, Upper (2), Good Creek (2), Hay Creek (2), Logan Creek (aka Tally Lake Creek) (2), Lost Creek (2), Martin Creek (2), McGinnis Creek (2), Moran Creek (2), Mouse Creek (aka Moose Creek) (2), Red Meadow Creek (2), Stillwater River, Reach 1 (2), Stillwater River, Reach 2 (2), Stillwater River, Reach 3 (2), Stillwater River, Reach 4 (2), Sunday Creek (2), Tepee Creek (2), Trail Creek (2), Truman Creek (2), Whale Creek (2), Whitefish River (2), Wild Bill Creek (2)
76M Clark Fork, Between Blackfoot And Flathead Rivers	Alberton, Evaro, Haugan, Missoula, Quinns, Saltese, St. Regis, Superior	Off	Fish & Wildlife	Immemorial	116	Albert Creek (2), Big Blue Creek (2), Big Creek (2), Big Sunday / Silver Creek (2), Burnt Fork (2), Butler Creek (8), Cedar Creek (6), Clark Fork River (2), Cold Creek (4), Deep Creek (2), Dry Creek (2), Eddy Creek (2), Fire Creek (2), First Creek (2), Fish Creek (2), Fish Creek, South Fork (2), Fish Creek, West Fork (aka Fish Creek) (2), Flat Creek (2), Grant Creek (2), Johnson Creek (2), Keystone Creek (2), Little Joe Creek (2), Lost Creek (2), Lozo Creek (2), McCormick Creek (2), Meadow Creek (2), Ninemile Creek (4), Oregon Creek (aka Oregon Gulch) (2), Packer Creek, West Fork (2), Pardee Creek (2), Petty Creek (2), Rainy Creek (2), Rattlesnake

United States and CSKT 10,000 Claims Analysis

Basin	Towns and Cities	On / Off FIR	Purpose / Use	Priority Date	Total # Claims	Source
76M		Off				`Creek (2), Rock Creek (4), Saint Regis River (aka St. Regis River) (4), Savenac Creek (2), Sawmill Creek (2), Second Creek, North Fork (2), Sheridan Creek (2), Siegel Creek (2), Soldier Creek (2), Sunrise Creek (2), Tamarack Creek (2), Thompson Creek (2), Trout Creek (2), Twelvemile Creek (2), Twin Creek, West (2), Twomile Creek (aka Two Mile Creek) (2), Ward Creek (2)
76N Clark Fork, Below Flathead River		On	Fish & Wildlife Other Springs Irrigation: HIA Future Stock Ponds Total	Immemorial Immemorial 1855 1855 1855	4 0 3 3 3 13	Creeks: Alder Creek (4), Alder Creek, Unnamed Tributary (6), McGinnis Creek (1), McGinnis Creek, Unnamed Tributary (2)
76N	Heron, Noxon, Paradise, Plains, Thompson Falls, Trout Creek,	Off	Fish & Wildlife	Immemorial	88	Bear Creek (2), Big Beaver Creek (2), Big Rock Creek (2), Blue Creek, East Fork (2), Bull River (2), Bull River, East Fork (2), Cararact Creek (2), Cherry Creek (2), Chippy Creek (2), Clark Fork River (1), Clark Fork River, Lower (3), Clear Creek (2), Deep Creek (2), Dry Creek, East Fork (2), Dry Creek, West Fork (2), Eddy Creek (2), Elk Creek, East Fork (2), Fishtrap Creek (2), Graves Creek (2), Honeymoon Creek (2), Little Beaver Creek (2), Little Thompson River (2), Little Thompson River, North Fork (2), Marten Creek (2), Marten Creek, South Fork (2), McKay Creek (2), Munson Creek (2), Murr Creek (2), Pilgrim Creek (2), Prospect Creek (4), Rock Creek (2), Squaw Creek (2), Swamp Creek (2), Swamp Creek, West Fork (2), Thompson River Middle Section (2), Thompson River, Gauge Section (2), Thompson River, Upper Section (2), Thorne Creek (2), Trout Creek (2), Vermilion River (2), Weeksville Creek (2), White Pine Creek (2), Wilkes Creek (2)
Total Number of Claims Filed 06/15/2015					10,126	

United States and CSKT 10,000 Claims Analysis

Notes:

THE CLAIMS IN THIS CHART ARE EXCLUDED FROM THE DNRC ONLINE DATABASE

The claims listed here have not been added to the DNRC water rights database that is available to the public on line, however the DNRC will send you a DVD with copies of the thousands of abstracts that make up this information.

We believe this exclusion from the state databased is intentional because the state does not want these claims to be on the radar of should never have allowed these claims to be filed in the first place because there is no foundation for most of them

WHAT THESE CLAIMS ARE AND WHAT THEY ARE NOT

The claims noted consist in part of some “federal reserved water rights”, that carry an 1855 priority date, but not all of those claims are bona fide “federal reserved water rights” that fulfill the primary purpose of the Flathead Reservation per the tribe’s treaty. All of the claims that carry a time immemorial priority date are a “grand experiment” in that they are a United States and CSKT invented “Indian Reserved Water Rights” that do not exist.

While the United States has overreached in a similar manner for other tribe’s such as the Nez Perce and the Coeur d’Alene Tribes , Idaho stopped it in its tracks by choosing to protect the water rights of its citizens and allowing only a proper federal reserved water rights adjudication to take place.

Unlike Montana, Idaho understands that they do not have the jurisdiction to quantify so called off reservation “Indian Reserved Water rights”, and

they are actively seeking to protect the water and property rights of all of their citizens.

MONTANA’S GOAL OF A WATER COMPACT NO MATTER WHAT THE COST

In 2013 and 2015, prior to ratification of the CSKT compact by the Montana legislature the three government parties to the compact began making threats of 10,000 claims covering 2/3 of the state of Montana, unless the CSKT compact was ratified.

After failing to ratify the compact in 2013, the tribe’s budgeted substantial funds for a compact public relations and advertising campaign.. In 2014 they hired Denny Rehberg / Mercury LLC for that purpose.

Mercury immediately created the façade of a “grassroots” agricultural organization, called FARM, consisting of tribal contractors, and irrigators fearful of the 10,000 claims, specifically for the purpose of using the threat of those claims to **COERCE THE RATIFICATION OF THE CSKT WATER COMPACT.**

FARM, Grassroots, Astroturf, or Something Else?

<https://westernmtwaterrights.wordpress.com/2016/04/21/farm-grassroots-astroturf-or-something-else/>

Over the past two years, the CSKT have budgeted millions of dollars to continue their threat campaign via FARM, making the threat look as though it was an official notice from the Montana water court. Here is one example:

<https://westernmtwaterrights.files.wordpress.com/2018/08/farm-water-rights-mailing-080820181.pdf>

THE PARTIES TO THE COMPACT DON’T WANT CSKT COMPACT OR THE US / CSKT 10,000 CLAIMS TO EVER BE EXAMINED

The map on the front page of this document depicts the mess that Montana’s leadership allowed to take hold over our state and fully expresses the power and leverage they willingly ceded to the CSKT in their quest for a water compact.

After decades of getting nowhere in negotiations, Montana should have pulled the plug and gone straight to the adjudication process to resolve the tribe’s federal reserved claims. Instead it caved in to every demand made by the CSKT, leaving the people of Montana to fix the mess they have created. Officials did this knowing that Montanans do not have the financial resources to fight such a battle.

The three government parties to the CSKT compact are fully aware of the overreach represented by the compact and the 10,000 claims. Their end game is to get the compact ratified in Congress without ever telling the public how much water was ceded to the tribes and without having THE UNITED STATES AND TRIBES CLAIMS EXAMINED FOR LEGALITY OR REASONABLENESS. **As a matter of fact, the language in the compact is designed to achieve exactly that objective.**

So the multi-billion dollar question is this:

Will Montana’s Congressional delegation fix the mess that their Federal Indian Policy has created by ratifying a bona fide federal reserved water rights settlement, or will they support the federalization of Montana’s water and the failure of Montana’s leadership to do the right thing?